

GARBRELLA LLC.

www.garbrella.com

Tuscany pergola install manual

Pergola Assembly Manual

The following content is a general guideline

For the assembly of a Tuscany Pergola.

This is used only as a reference and may or may not include all your items.

Following is a list of key points:

- A proper foundation is crucial for proper pergola support.
- Use caution when handling to prevent scratches or damage.
- Recommended having 2 healthy people for the installation process.
- For optimum shade have your beams running east and west.
- Remember to use Caution and follow all safety rules!
- Layout all material and determine the placement of your pergola
- Pictures may not be an exact representation

Glue for Pergola Caps

Concrete Lag

Screw for Shade slats

Screw for Joist Hanger to Ledger Board

Screw for Rafter Bracket and rafter to joist hangar

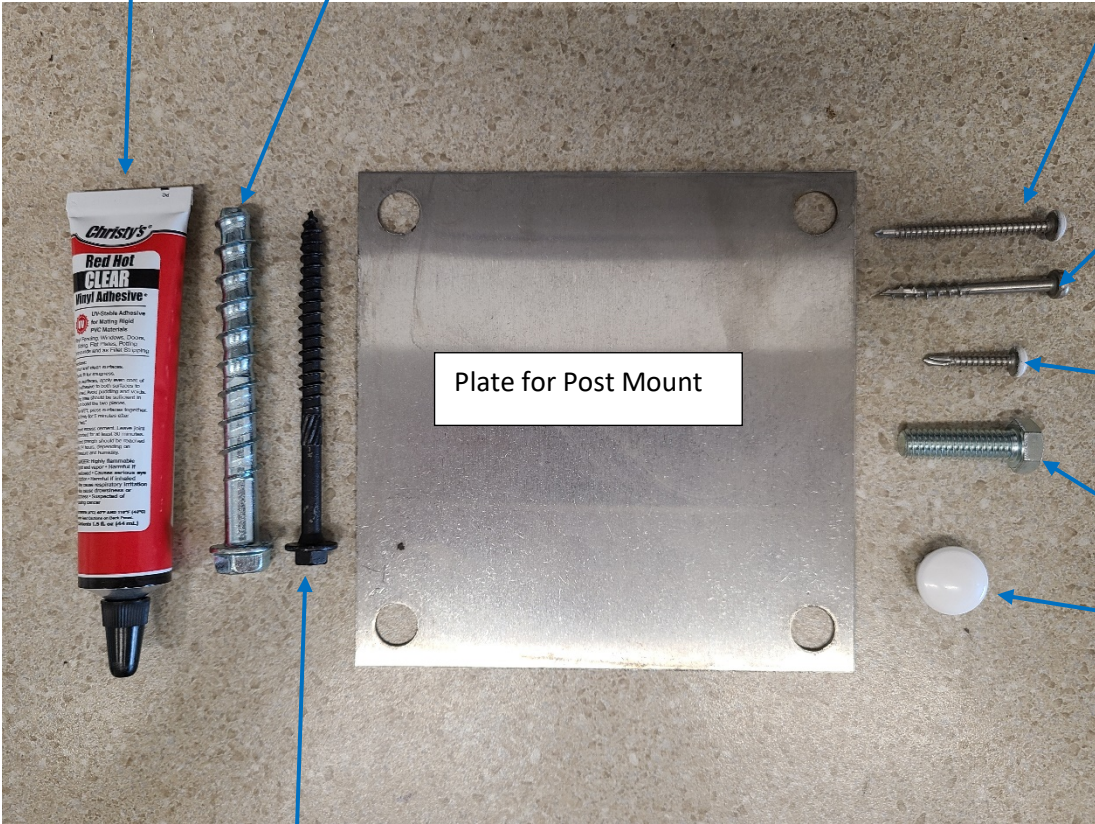
Leveling Bolt

Hole Plugs

Plate for Post Mount

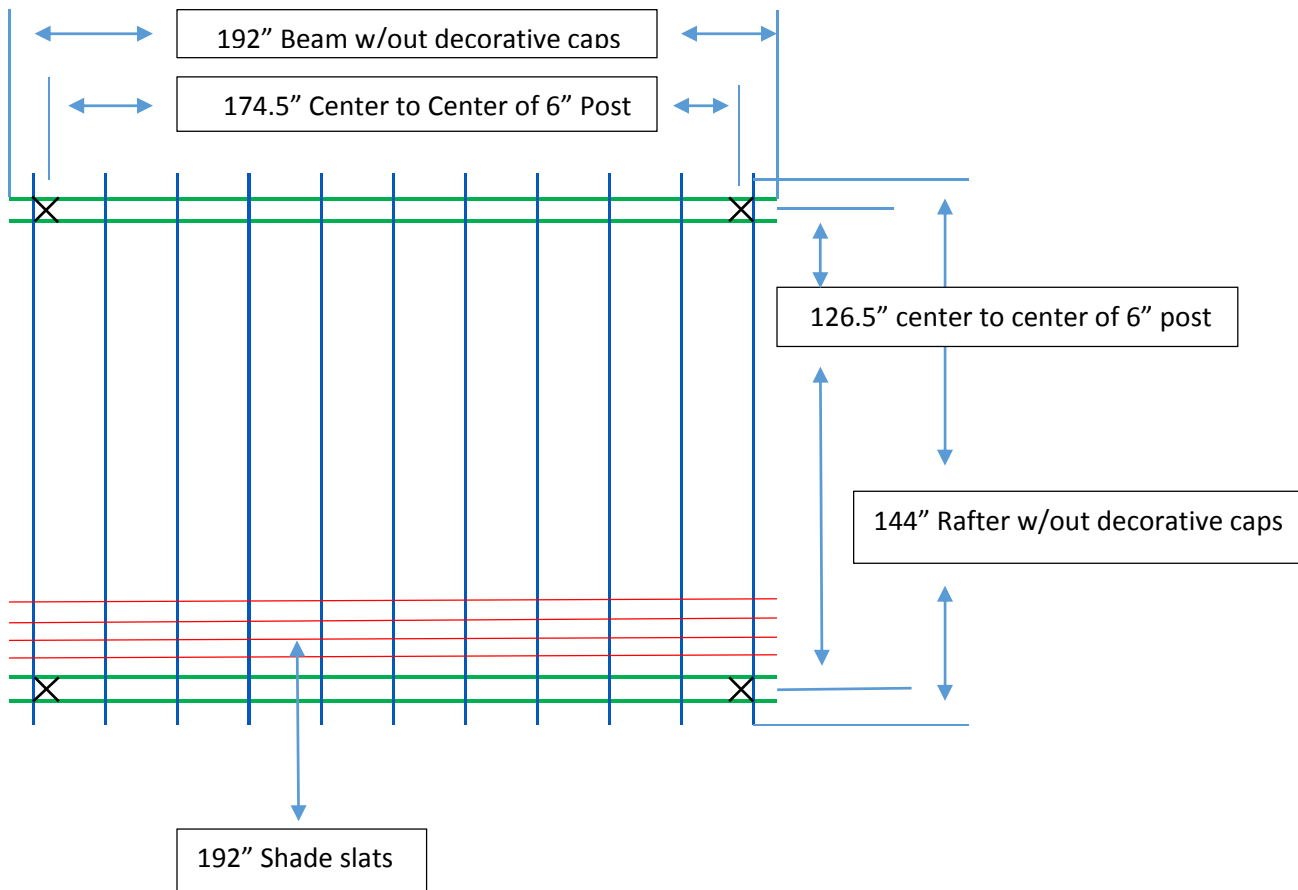
Screw for Ledger Board or Wood Lag

(NOT PICUTRED)
#12x2.5" Self-tapping screw for fastening "L" Bracket, beam, and rafter to post.



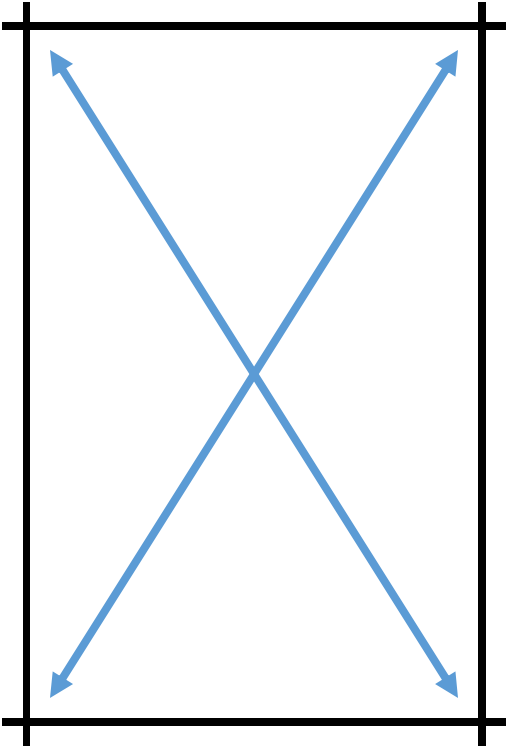
Following is a layout of a 12' x 16' Free-Standing Tuscan Pergola

- Diagram shows the standard 4" overhang
- Customer has the flexibility of a 2" – 36" overhang
- Post size changes the center to center dimension
- Minimum spacing for shade slats is 3"



Determine the Placement of your Posts

Place leveling plate on the corner X and measure across to square pergola.



Measuring Post Height

Measure from the bottom of the post plate and mark at the desired height. Example shows 9' height to the bottom of the beam.

You should have between 12-13.5" from the mark to the top of the post. If you have more cut the top of post. If you have less than lower the bracket mount.

The vinyl sleeve may need to be modified. It should be no lower than 1 1/2" from the top of the "L" bracket.

***For the 6" Vinyl Sleeve you will need to install the bracket after the sleeve is installed.

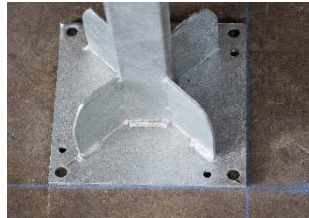


Place the "L" bracket at the mark and screw it to the post using the #12x2.5" self-tapping screws.



Mounting Posts to Concrete

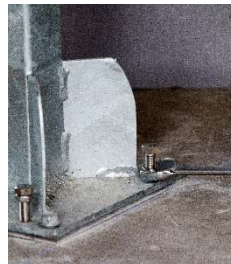
- After you determine the location of the post, mark and drill the holes.* It is easier using the plate for the post mount rather than the post mount itself as shown in second picture.



- Tighten the concrete lags with a 9/16" socket and impact. ** It is much easier to use a cordless impact rather than a ratchet.

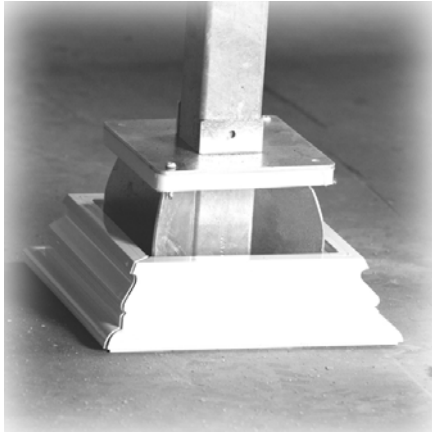


- Level the post by tightening or loosening the leveling bolts. After the post is level retighten the concrete lags.



Install Post Skirts

1. Install bottom post skirt. This can either be done before or after the sleeve is over the post mount.



2. The 8" square vinyl columns have a mid trim located between 12-16" from top trim.



3. Place the skirt on the top of post sleeve.



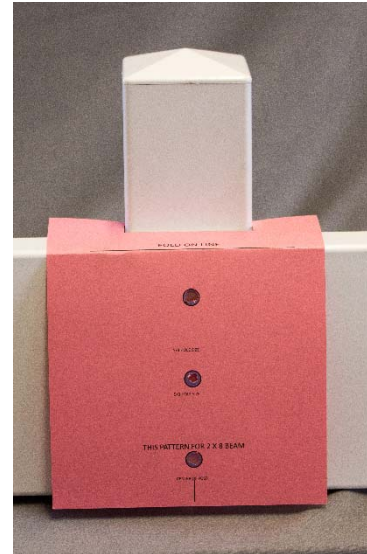
4. Glue cap onto the 4x4 Post



Mounting the Beam

- Templates can be provided to give you accurate placement when you drill your holes to mount the beam to the post, however it is easier to measure rather than using the template. *Drill carefully and place your holes accurately. Beam overhang from the outside posts should be proportional. Use caution as beams may be heavy!

Set your 2x8 beam on the beam plate support and use the template as shown in the picture. Use a 5/8" vinyl bit and drill through the vinyl only. Then use a 1/4" aluminum bit and drill through the aluminum and the vinyl on the opposite side. *Notice do not drill into the post. ** Tip, It may be easier to lay the beam on the ground after you have it marked, but be careful that the aluminum insert doesn't move during transition.



After the holes are drilled in the beam, use the #12x2.5" self-tapping screws and fasten the beam to the post. This takes a powerful Drill, but it pays off with a more rigid structural to the pergola. *Be sure to fasten the beam tight against the post



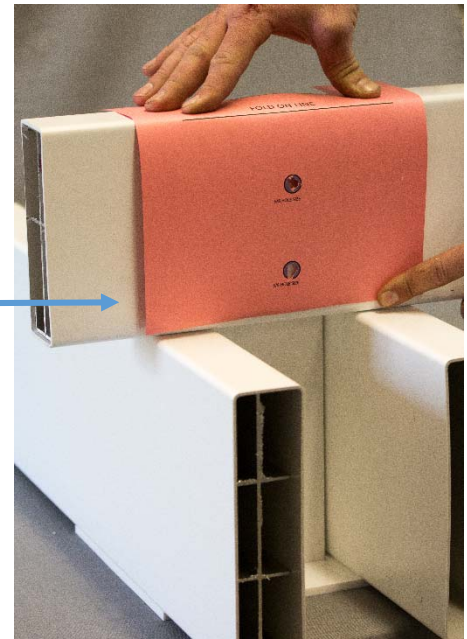
- The Tuscany pergola has a 2x8 beam on each side of the posts.

Fastening the Rafters (Step 1)

- Begin by fastening a rafter on each end of the pergola. For a standard pergola, they should be fastened to outside of the end posts. However, if you requested a change of layout or are doing an overhang that is greater than 4", you may want to fasten the rafter with a bracket rather than fastening it against the post.

Fastening the rafter to the post is a similar process as fastening the beam to the post. Set the rafters on the beams and use the template that is marked for the 2x6 rafter to mark the holes. Drill the vinyl first with a 5/8" drill bit and finish drilling the aluminum insert with a 1/4" aluminum drill bit.

*Do not drill into the post. Fasten the rafter to the post with the self-drilling bolts that are provided in the kit.



For Attached Pergolas Only

- Fasten the ledger board to the surface of your house or other type of building.
- Drill a 5/8" vinyl drill bit in the vinyl after you have your screw placement marked.
- Use the 4" wood lags that are provided and fasten 2 lags every 12"-16" to a structural surface.
- Fasten the joist hanger to the ledger board with the provided screws.
- Be sure to use the same measurement that is used for the rafter brackets to keep the rafters straight.
- Fill the hole with a hole plug.



*** The ledger board will be fastened higher than the free-standing beam; 6" for a 6" Beam, 7" for a 8" Beam.

For Attached Pergolas Only (Step 2)

- Now you are ready to fasten the rafters to the joist hangers.
- Slide the joist hanger cover onto the rafter (be sure to place the cover right side up so that it will connect to the hanger).
- Set the rafter onto the joist hanger and fasten the screws to each side.
- Slide the cover over the bracket.



Fastening the Rafters (Step 2)

- After the 2 outside rafters are installed, measure the center to center distance between the rafters.
- Divide the distance by 1 less than the total amount of rafters received.
- This measurement will provide you with the actual rafter spacing (average 16"-18" unless custom ordered).
- Use that measurement to mark and fasten the rafter brackets.
- Fasten each bracket with 1 screw to allow the rafter to be centered on the bracket.
- After rafter is placed on the bracket, fasten all the remaining screws.



Post spacing for rafter

Overhang recommendation

Minimum of 4 inches and a maximum of 36 inches

The following will give you a 4 inch overhang

Decorative pergalo caps will be glued to the end of rafter giving additional overhang

Figure 3 single span

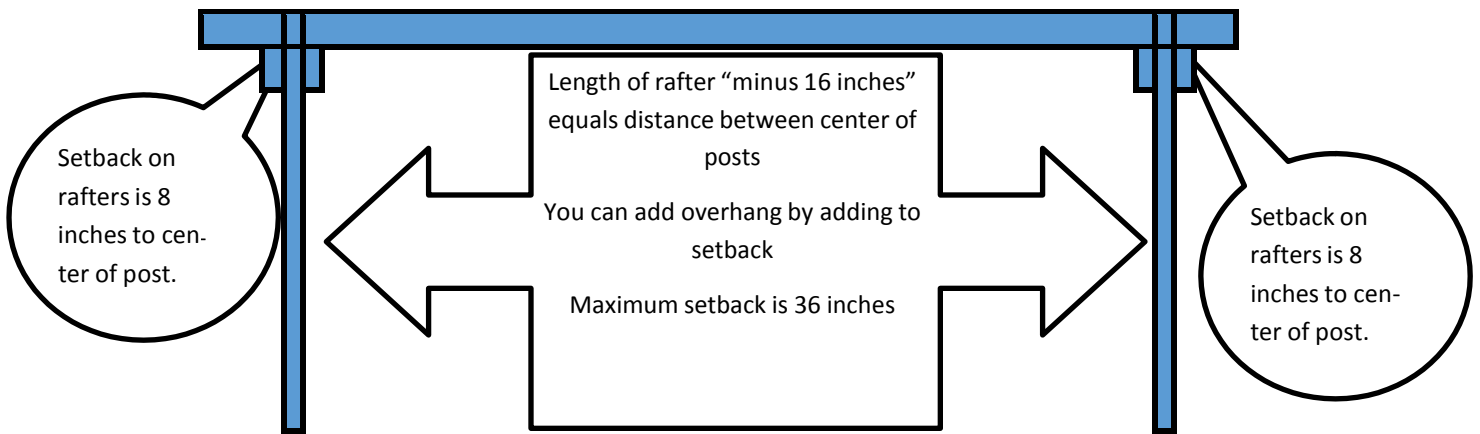
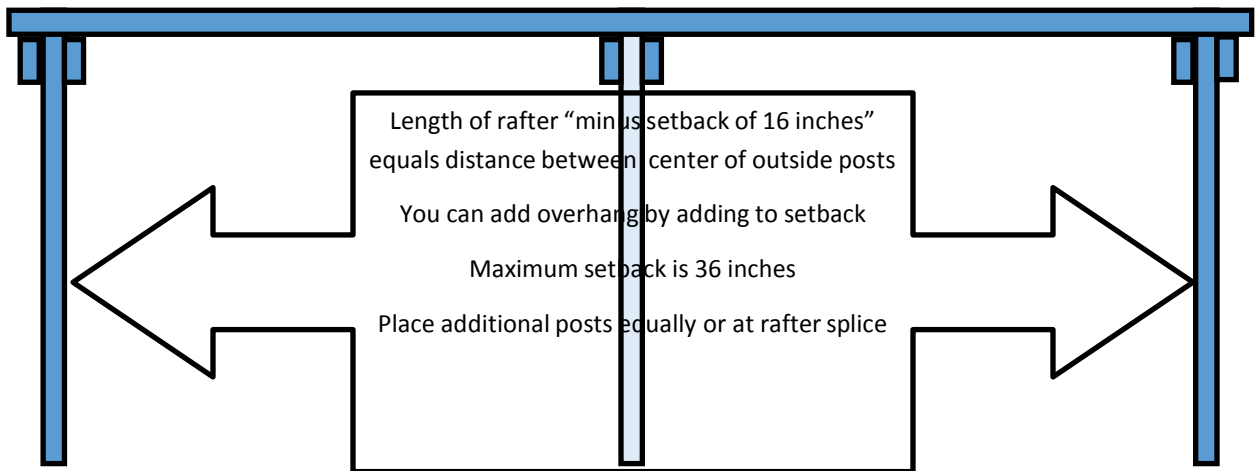


Figure 4 multiple span



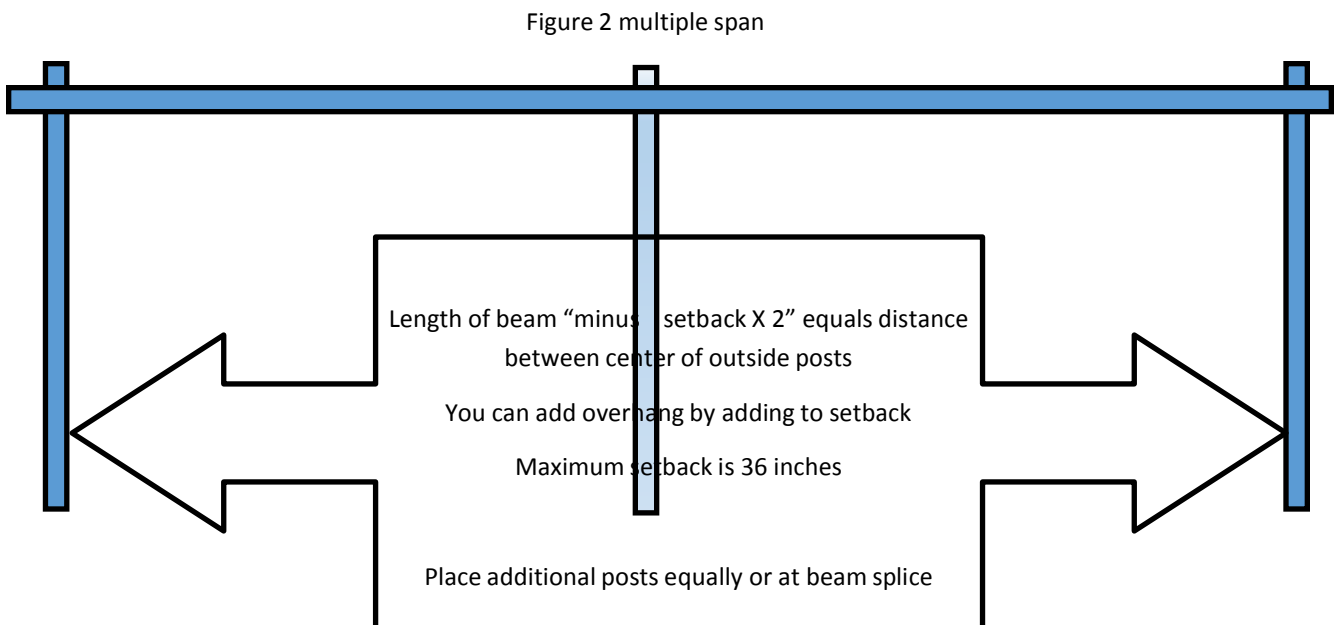
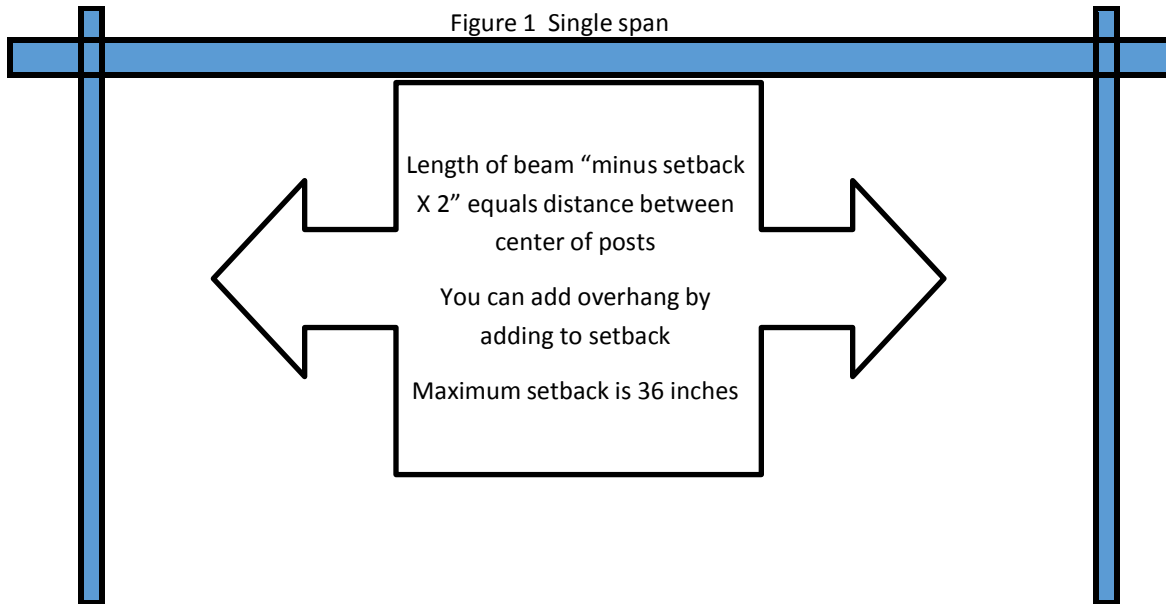
Overhang recommendation

Minimum of 4 inches and a maximum of 36 inches

The following setback will give your pergola a 4 inch overhang from trim. Decorative pergalo caps will be glued to the end of beam giving additional overhang Setback is from end of rafter or beam to center of post.

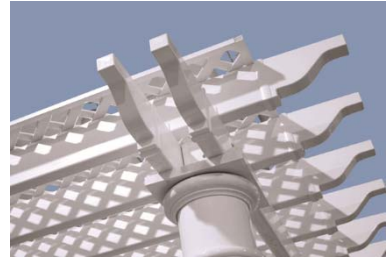
6 inch square post 8 3/4 inch to center of post

8 inch square post 9 5/8 inch to center of post



Fastening the Shade Slats

1. Spacing and type of shade slat does vary for each customer so check the spacing that is on the order and fasten accordingly. Screws are provided for your specific shade type.
2. Glue and install all the pergola caps and hole plugs.



Thank you for choosing,

Garbrella