

GARBRELLA LLC.

www.garbrella.com

Garden Spot pergola install manual

Pergola Assembly Manual

The following content is a general guideline

For the assembly of a Garden Spot Pergola.

This is used only as a reference and may or may not include all your items.

Following is a list of key points:

- A proper foundation is crucial for proper pergola support.
- Use caution when handling to prevent scratches or damage.
- Recommended having 2 healthy people for the installation process.
- For optimum shade have your beams running east and west.
- Remember to use Caution and follow all safety rules!
- Layout all material and determine the placement of your pergola
- Pictures may not be an exact representation

Glue for Pergola Caps

Concrete Lag

Screw for Shade slats

Screw for Joist Hanger to Ledger Board

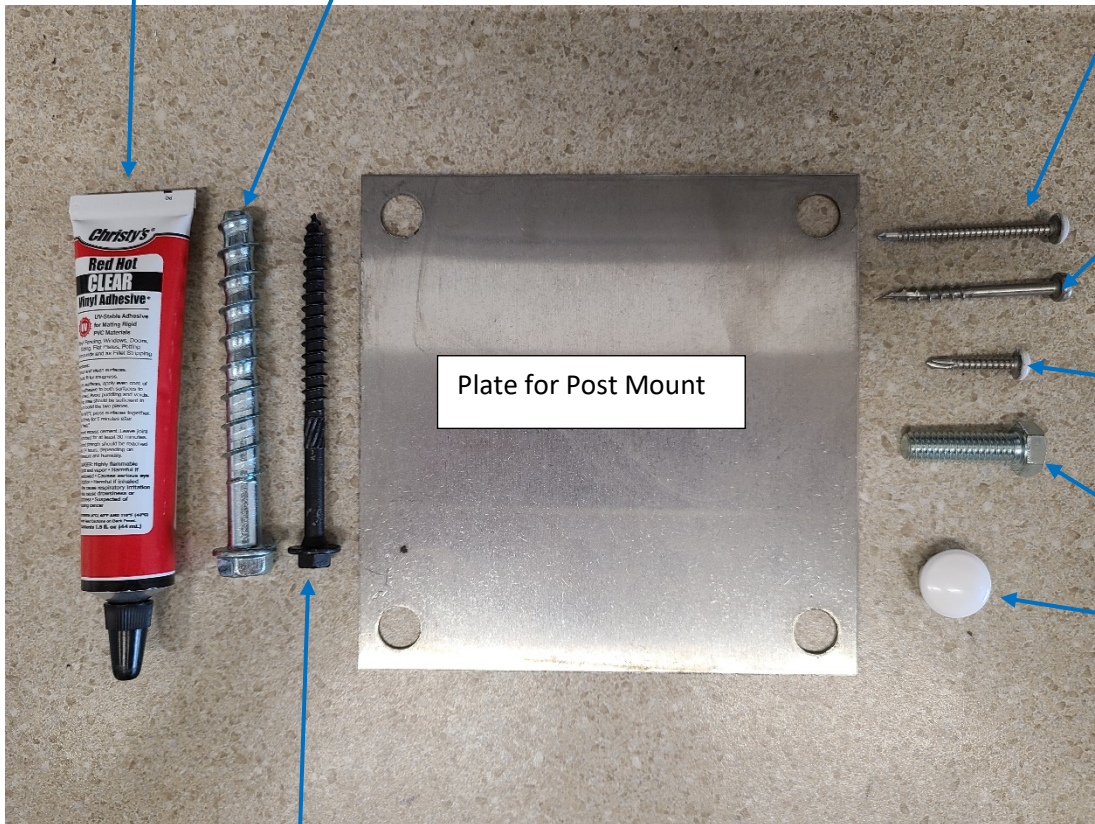
Plate for Post Mount

Screw for Rafter Bracket, rafter to joist hanger, and beam/rafter to post

Leveling Bolt

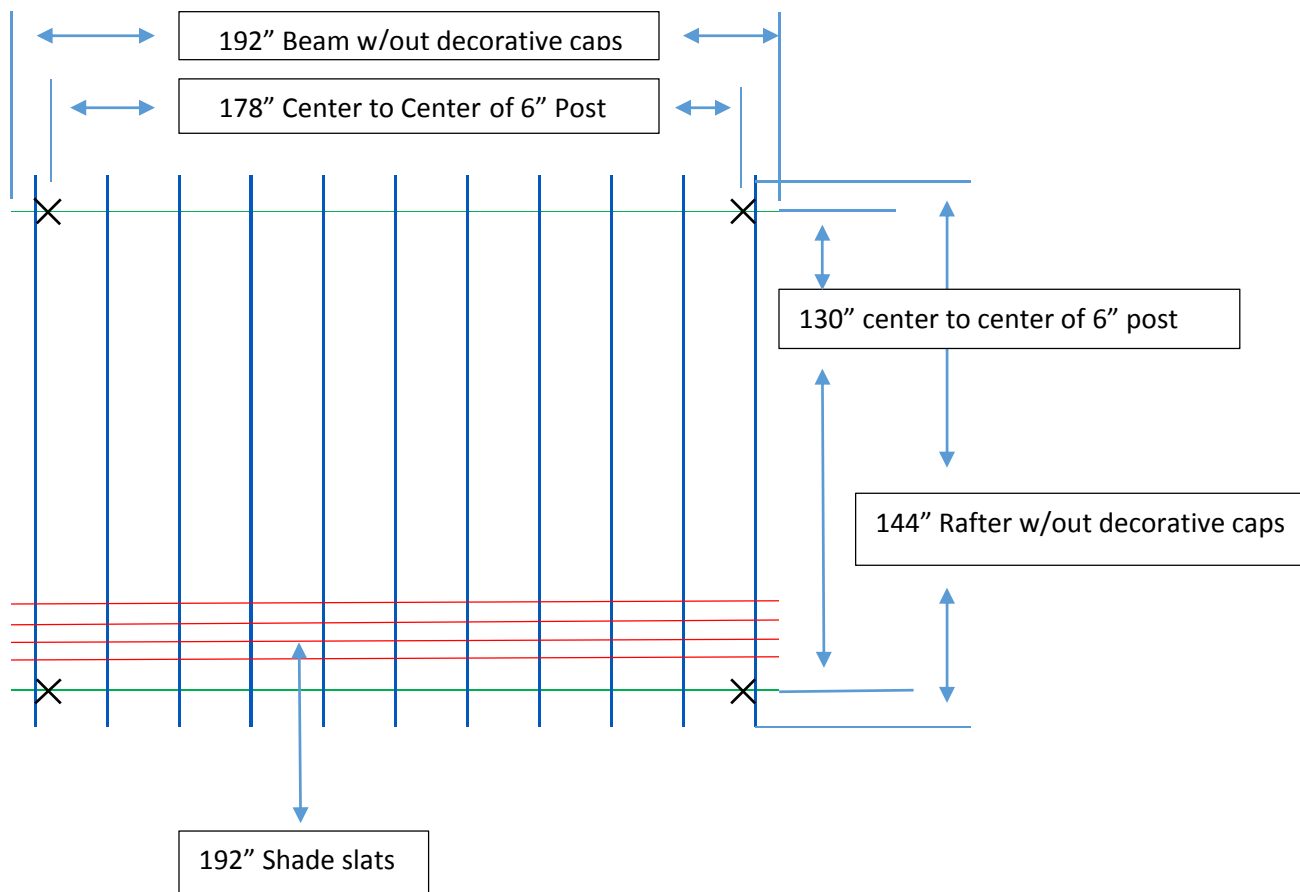
Hole Plugs

Screw for Ledger Board or Wood Lag



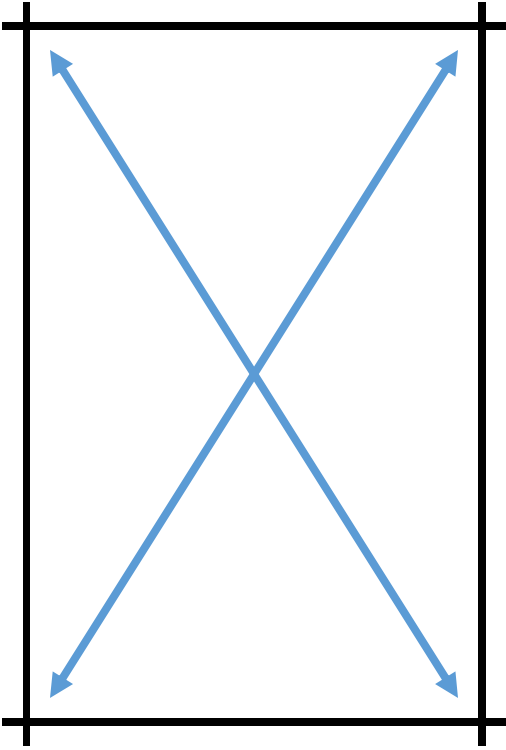
Following is a layout of a 12' x 16' Free-Standing Garden Spot Pergola with 6" square posts.

- Diagram shows the standard 4" overhang
- Customer has the flexibility of a 2" – 36" overhang
- Post size changes the center to center dimension
- Minimum spacing for shade slats is 3"



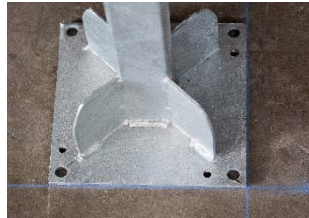
Determine the Placement of your Posts

Place leveling plate on the corner X and measure across to square pergola.



Mounting Posts to Concrete (Actual post may differ)

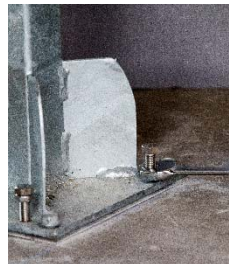
- After you determine the location of the post, mark and drill the holes.* It is easier using the plate for the post mount rather than the post mount itself as shown in second picture.



- Tighten the concrete lags with a 9/16" socket and impact. ** It is much easier to use a cordless impact rather than a ratchet.



- Level the post by tightening or loosening the leveling bolts. After the post is level retighten the concrete lags.



Installing Beams & Rafters

1. If necessary cut vinyl posts to correct height, Install bottom trims, and slide over the galvanized post mount. Keep in mind, if the mounting surface is uneven you may want to use a laser or level to get the tops of the posts level, and cut the bottom of each post accordingly.
2. Install the beams onto the posts. Install the beams by sliding the one end thru a post and return the opposite end of the beam into the post on the other end.



3. To fasten the beam or rafter to the post; Use the vinyl "L" channel, insert on the inside of the post and lay it on top of the beam or rafter. With a bit adapter use 2-1" screws and secure it to the beam or rafter. This will hold it tight and not allow the beam or rafter to move. Be sure to keep your screws toward the outside of the post to allow your perpendicular rafter to insert without hitting the screw. Repeat for each post.



4. Install the two outside 2x6 rafters on each end the same way the 2x8 beams were installed. Install the remaining rafters using the rafter brackets to attach to the beam. To figure the correct rafter spacing: Get the Center to Center measurement of the 2 outside rafters and divide by 1 less than the total of number of rafters remaining.

For Attached Pergolas Only

- Fasten the ledger board to the surface of your house or other type of building.
- Drill a 5/8" vinyl drill bit in the vinyl after you have your screw placement marked.
- Use the 4" wood lags that are provided and fasten 2 lags every 12"-16" to a structural surface.
- Fasten the joist hanger to the ledger board with the provided screws.
- Be sure to use the same measurement that is used for the rafter brackets to keep the rafters straight.
- Fill the hole with a hole plug.



*** The ledger board will be fastened higher than the free-standing beam; 6" for a 6" Beam, 8" for a 8" Beam.

For Attached Pergolas Only (Step 2)

- Now you are ready to fasten the rafters to the joist hangers. (New Joist Hangers have vinyl back plate).
- Slide the joist hanger cover onto the rafter (be sure to place the cover right side up so that it will connect to the hanger).
- Set the rafter onto the joist hanger and fasten the screws to each side.
- Slide the cover over the bracket.



Fastening the Rafters (Step 2)

- After the 2 outside rafters are installed, measure the center to center distance between the rafters.
- Divide the distance by 1 less than the total amount of rafters received.
- This measurement will provide you with the actual rafter spacing (average 16"-18" unless custom ordered).
- Use that measurement to mark and fasten the rafter brackets.
- Fasten each bracket with 1 screw to allow the rafter to be centered on the bracket.
- After rafter is placed on the bracket, fasten all the remaining screws.



Post spacing for rafter

Overhang recommendation

Minimum of 4 inches and a maximum of 36 inches

The following will give you a 4 inch overhang

Decorative pergalo caps will be glued to the end of rafter giving additional overhang

Figure 3 single span

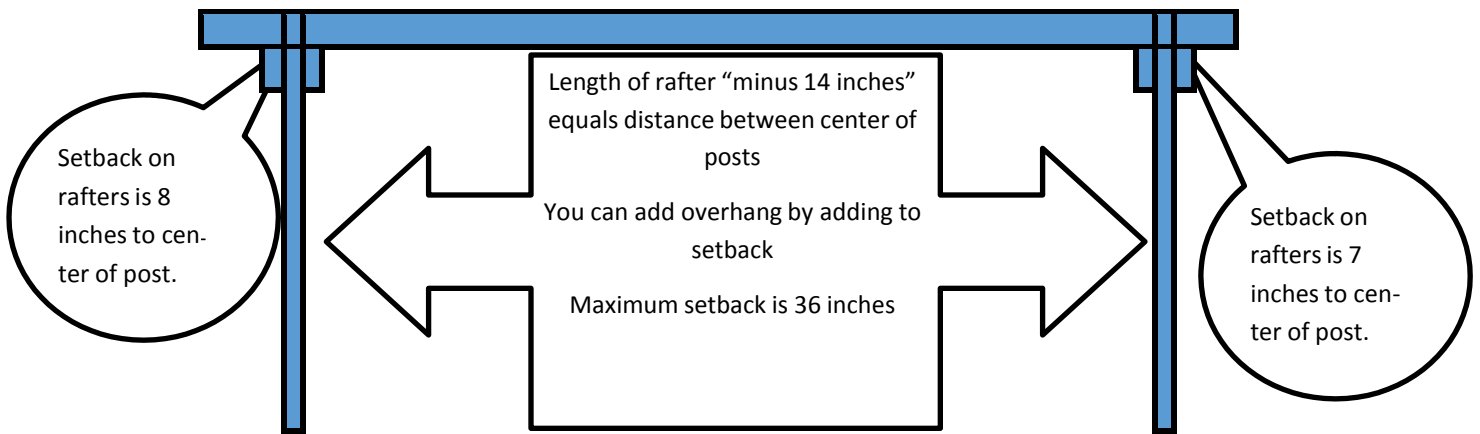
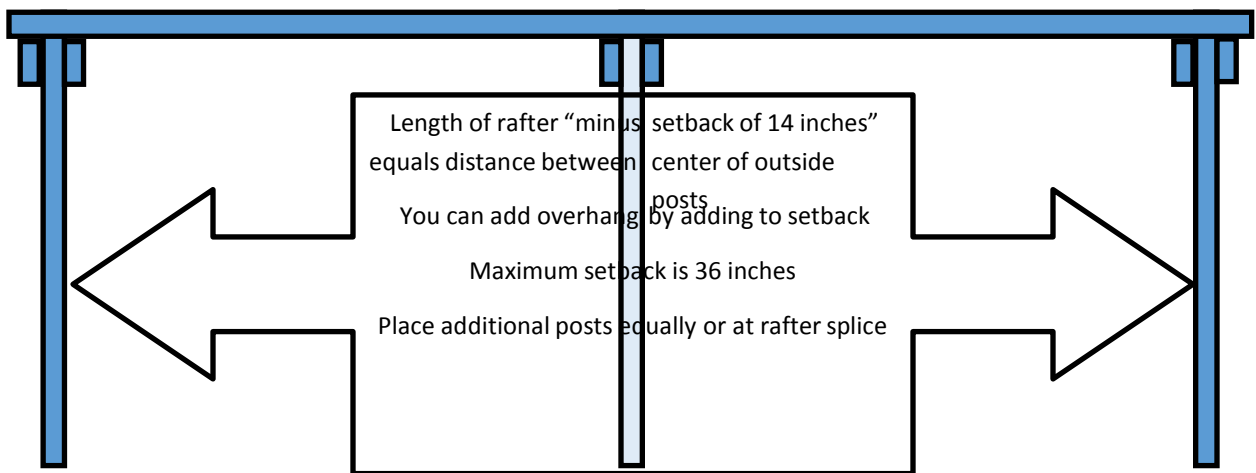


Figure 4 multiple span



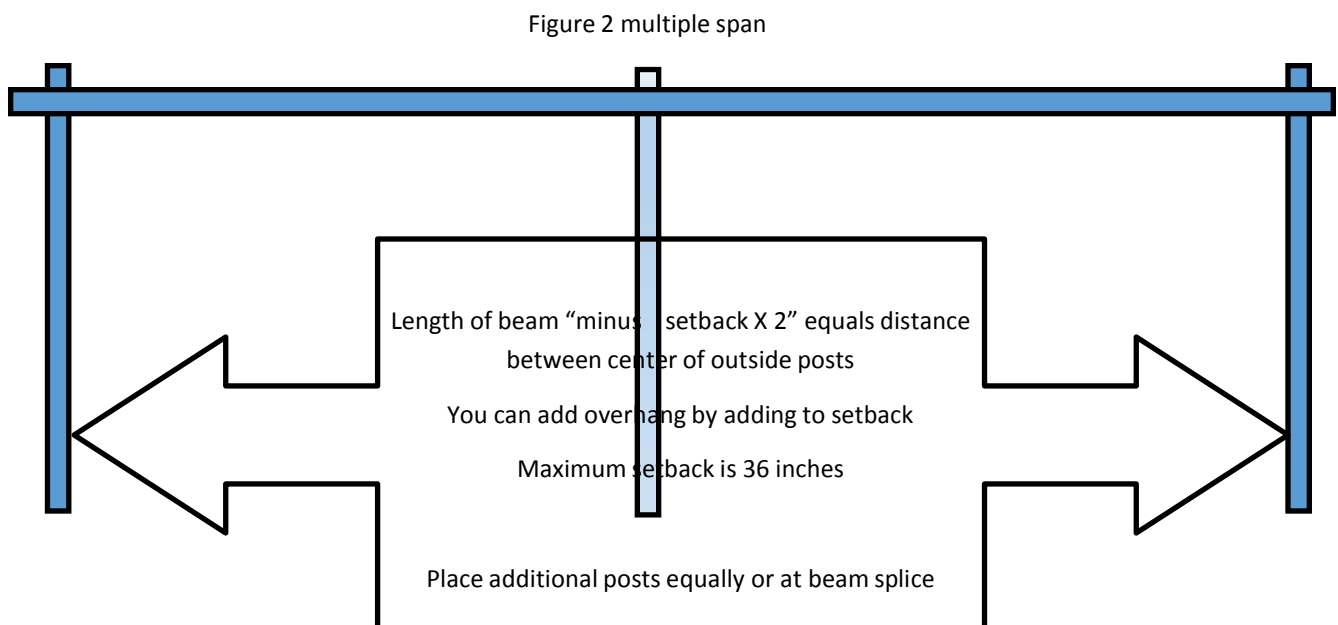
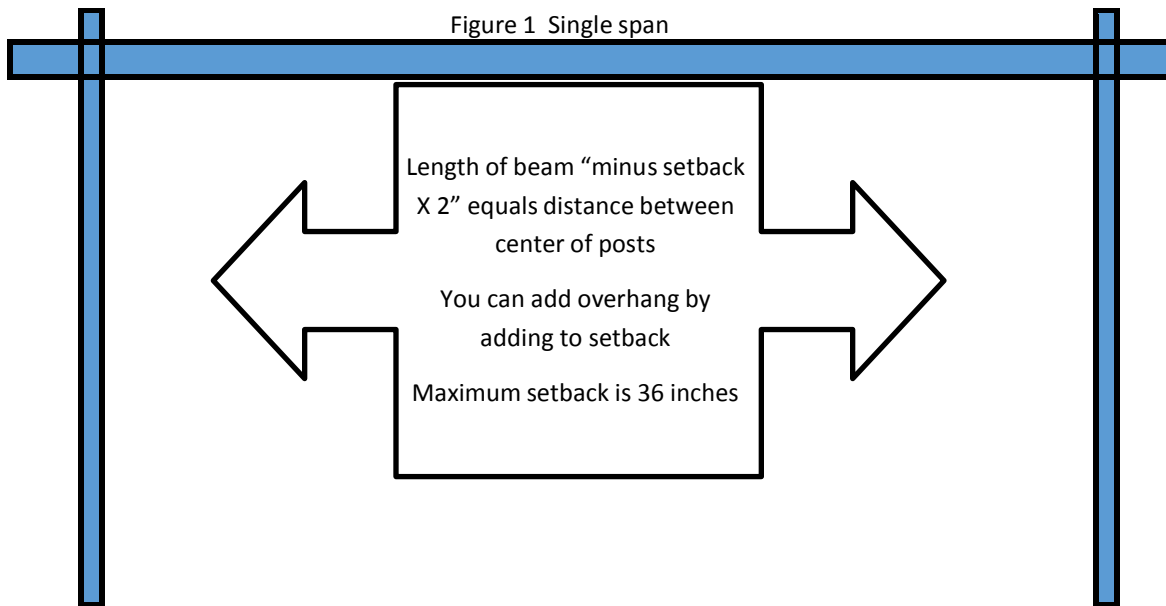
Overhang recommendation

Minimum of 4 inches and a maximum of 36 inches

The following setback will give your pergola a 4 inch overhang from trim. Decorative pergalo caps will be glued to the end of beam giving additional overhang Setback is from end of rafter or beam to center of post.

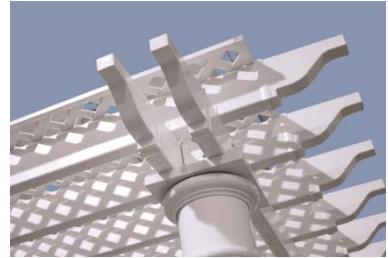
5 inch square post 6.5" to center of post

6 inch square post 7" to center of post



Fastening the Shade Slats

1. Spacing and type of shade slat does vary for each customer so check the spacing that is on the order and fasten accordingly. Screws are provided for your specific shade type.
2. Glue and install all the pergola caps and hole plugs.



Thank you for choosing,

Garbrella